



petroleum equipment manufacturing solutions

2025



Built to fuel with precision and excellence

High accuracy and repeatability meter with mechanical register and air eliminator. Designed to minimize uncertainties in measurement, making it a trustworthy instrument for fuel transfer applications where precision is vital.



Positive displacement meter



Oval gear meters



Oval gears



Semi-finished



MJ65 flow meter



Preset meter



Turbine meter



LC flow meter



Unloading meter

ETM-PST Preset Oval gear flow meter



Diesel version



AdBlue®version



Gasoline version



**Add-on transaction
ticket printer
on request**

The ETM-PST preset meter is designed for diesel counting with commercial or non-commercial purpose. It can be pre setted by SALE or LITER. The meter can stop the liquid flow by cutting off the electricity to the pump. This meter can be used in factories, logistics companies, mining industries, construction machinery, etc.

Technical Data:

1. Power supply: DC12V/24V AC220V/50HZ
2. In/outlet: 1" / 1.5"
3. Flow Range: 20-80L/min (1") 20-150L/min (1.5")
4. Liquid type: Diesel/Kerosene/ AdBlue®/DEF/AUS32
5. Flow direction: →
6. Accuracy: $\pm 0.5\%$ Repeatability: $\leq 0.17\%$



ETM-F- P Oval gear flow meter with pulser output

Accurate to 0.5%, this meter featuring an oval gear measurement system, designed for extreme precise measuring of low viscosity fluids.. It can be widely applied in factories, coach yard, gas stations and household where diesels need to be measured. Easy to operate.

EASY CALIBRATION

+/-0.5% ACCURACY

0.17% ≤ REPEATABILITY

Technical Data:

1. Max. pressure: 3.5 Bar
2. In/outlet: 1"
3. Flow Range: 20-120 L/min
4. Application: Diesel/Kerosene (Do not use gasoline or products with low flash point!)
5. Flow direction: ← (Can be → if requested)
6. Accuracy: $\pm 0.3\%$ Repeatability: $\leq 0.17\%$



Technical Data:

1. Max. pressure: 3 Bar
2. In/outlet: 1"
3. Flow Range: 20-120 L/min
4. Application: Diesel/Kerosene (Do not use gasoline or products with low flash point!)
5. Accuracy: $\pm 0.5\%$ Repeatability: $\leq 0.17\%$

ETM-F-PC Meter with pulser output



Technical Data:

1. Max. pressure: 3 Bar
2. In/outlet: 1"
3. Flow Range: 20-120 L/min
4. Body material: PP
5. Application: AdBlue®/DEF/AUS32
6. Accuracy: $\pm 0.5\%$ Repeatability: $\leq 0.17\%$



Technical Data:

1. Max. pressure: 3 Bar
2. In/outlet: 3/4"
3. Flow Range: 10-40 L/min
4. Body material: PP
5. Application: AdBlue®/DEF/AUS32/Diesel
6. Accuracy: $\pm 0.5\%$ Repeatability: $\leq 0.17\%$

ETM-F-PC2 Oval Gear Meter with pulser output

Digital turbine flow meter

Item No.: ETM-E

In/outlet: 1" 1.5"

Flow range: 20-120L/min 30-200L/min

Precision: $\pm 1\%$

Working temperature: $-10\sim 50^{\circ}\text{C}$

Fluid type: Diesel/gasoline/kerosene

Unit: Liter/Gallon/Pints/Quarts



Turbine flow meter

Item No.: ETM-E24

In/outlet: male 1"

Flow range: 10-100L/min

Precision: $\pm 1\%$

Working temperature: $-10\sim 50^{\circ}\text{C}$

Fluid type: AdBlue® /Diesel





4-Digit flow meter (Nutating disk type)

Item No.: ETM-B

In/outlet:1"

Flow range: 20-120L/min

Precision: $\pm 1\%$

Partial indicator: max. 9999L

Total: max.99999999L

Working temperature: -10~50°C



Nutating disk



Digit flow meter (Oval gears type)

Item No.: ETM-OGM-BE25

In/outlet:1"

Flow range: 20-120L/min

Precision: $\pm 0.5\%$

Working temperature: -10~50°C

Max.Pressure: 3.5Bar



4-Digit flow meter (Oval gears type)

Item No.: ETM-B-TC

In/outlet:1"

Flow range: 20-120L/min

Precision: $\pm 1\%$

Partial indicator: max. 9999L

Total: max.99999999L

Working temperature: -10~50°C



Oval gears



4-Digit flow meter (Nutating disk type)

Item No.: ETM-R

In/outlet:1.5"

Flow range: 20-120L/min

Precision: $\pm 1\%$

Partial indicator: max. 9999L

Total: max.99999999L

Working temperature: -10~50°C



Mechanical flow meter (Oval gears type)

Item No.: ETM-OGM-X25

In/outlet: 1"

Flow range: 20-120L/min

Precision: $\pm 0.5\%$

Working temperature: $-10\sim 50^{\circ}\text{C}$

Max. Pressure: 3.5Bar



Mechanical flow meter (Oval gears type)

Item No.: ETM-K600M

In/outlet: 1"

Flow range: 6-60L/min (engine oil)

Flow range: 10-100L/min (diesel)

Accuracy: $\pm 0.5\%$

Max. Pressure: 70Bar (engine oil)

30Bar (diesel)



Digital flow meter (Oval gears type)

Item No.: ETM-K600E

In/outlet: 1"

Flow range: 6-60L/min (engine oil)

Flow range: 10-100L/min (diesel)

Accuracy: $\pm 0.5\%$

Max. Pressure: 70Bar (engine oil)

30Bar (diesel)



Pulser flow meter (Oval gears type)

Item No.: ETM-K600P

In/outlet: 1"

Flow range: 6-60L/min (engine oil)

Flow range: 10-100L/min (diesel)

Accuracy: $\pm 0.5\%$

Max. Pressure: 70Bar (engine oil)

30Bar (diesel)

OGM Series Oval Gear Flow Meters

OGM series oval gear meter has the ability to handle a wide range of fluid viscosity with exceptional levels of repeatability and durability, applying in the petroleum, chemical, food industry, etc.



OGM-A-25

Oval gear meter with mechanical register



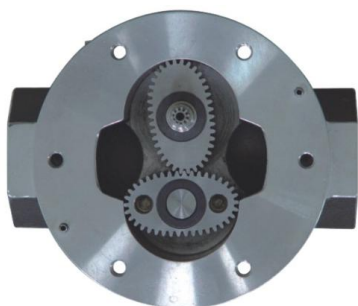
OGM-A-25-P

Oval gear meter with pulser output



OGM-E-50

Oval gear meter with LCD register



Oval gears structures makes counting more accurate and stable



Technical Specification & Package Data

Model	OGM-A-20	OGM-A-25	OGM-A-40	OGM-A-50
Size	3/4"	1"	1.5"	2"
Flow Range	10-80L/min	20-120L/min	25-250L/min	30-300L/min
Accuracy	$\pm 0.5\%$			
Repeatability	$\leq 0.17\%$			
Max. Viscosity	1000CPS			
Max. Pressure	34Bar	34Bar	18Bar	18Bar
Package	35*35*23cm	35*35*23cm	40*23*41cm	49*28*25cm
Net Weight	16kg	8kg	14kg	13kg
Gross Weight	17kg	9kg	15kg	14kg
Dimension	4PCS/CTN			2PCS/CTN

M series Positive Displacement Flow Meter

Excellent step less adjusting mechanism allows a micro adjustment of the meter High accuracy and repeatability over the widest range of flow; superior accuracy at constant flow Low maintenance, no metal-to-metal contact in measuring chamber, long lifetime service Low pressure loss, a true gravity flow meter.

Accuracy regardless of pressure fluctuations, temperature variation, viscosity choice of aluminum, cast iron and stainless steel materials of construction.



M-50-1

Meter with mechanical register, air eliminator and strainer



M-50-KPX-1

Meter with electronic register, strainer, air eliminator and solenoid valve



MA-50-CX-10

LPG Meter with mechanical register, differential valve, air eliminator and strainer



M-50-KX-1

Preset meter with preset mechanical register, preset valve, air eliminator and strainer



M-150-A-1

Meter with mechanical register 4" & 6" flange for option



M-80-G-1

Meter with mechanical register & printer, strainer, air eliminator



M-50-NX-1

Preset meter with mechanical preset register, printer, strainer, air eliminator and preset valve



M-50-PP-1

Meter with pulser output



M-50-8

Stainless steel meter with mechanical register, air eliminator and strainer



Technical Specification & Package Data

Model	M-40-1	M-50-1	M-80-1	M-100-1	M-150-1
Size	40mm/1.5"	50mm/2"	80mm/3"	100mm/4"	150mm/6" and 100mm/4" for option
Flow Range	25-250L/min	55-550L/min	115-1150L/min	170-1700L/min	300-3000L/min
Volume Per Revolution	0.309L	0.681L	1.839L	5.102L	14.87L
Max. Pressure	10Bar				
Accuracy	±0.2%				
Repeatability	≤0.07%				
Measurement Units	Liter/US Gallon/IMP Gallon				
Dimension	51*46*49cm	51*46*49cm	58*50*61cm	76*64*72cm	80*65*79cm
Net Weight	23kg	26kg	40kg	70kg	130kg
Gross Weight	25kg	28kg	47kg	93kg	180kg
Package	1pc/Strong Paper Carton			1pc/Wooden Case	





FL Air Eliminator

Aluminum, cast iron, stainless steel for option



GLQ-50



GLQ-150

GLQ Strainer

Aluminum, cast iron, stainless steel for option

Model	Diameter
GLQ-50	50mm/2"
GLQ-80	80mm/3"
GLQ-100	100mm/4"
GLQ-150	150mm/6"



Filter element

The proper filter element to use depend on the product and viscosity of the product over the expected range of metering temperatures.

Strainer Mesh	General Application
200M	LPG only
100M	Gasoline, Solvents, LPG
80M	Gasoline, Solvents
40M	Heating oil, Diesel oil, light oils
20M	Motor oils and viscous products

V series Piston Valves

The V-series mechanically actuated piston valves are available in 2" through 4" sizes and are designed for mounting on the meter outlet to provide tight shut off with smooth and easy operation regardless of system line pressure. Valves may be manually operated or connected via a mechanical linkage to a preset counter on the meter for single stage closure, or two stages closure to eliminate hydraulic shock.



V-80

Model	V-50	V-80	V-100
Size	1.5" and 2"	3"	4"
Max. Flow Rate	550L/min	1150L/min	1700L/min
Material	Aluminum		
Used with meter	M-40, M-50	M-80	M-100



K-80

K series Air Activated Differential Check Valve

The K-Series air-activated check valves are installed on the outlet side of the meter, and are designed to stop the flow of liquid whenever air is present to ensure accurate measurement.

Model	K-50	K-80
Size	1.5" and 2"	3"
Max. Flow Rate	550L/min	1150L/min
Material	Aluminum	Aluminum
Used with meter	M-40 M-50	M-80 M-100



V-50-LPG

V-50-LPG Differential Valve

The differential valve mounted on the meter outlet and connected at the valve to the vapor eliminator on the meter with function to stop liquid flow whenever vapor is present in the system. The valve maintains sufficient pressure to ensure that high-vapor pressure products such as LPG or anhydrous ammonia (NH₃) always remain in the liquid state. The valve is spring loaded and designed to fail closed.

Model	V-50-LPG
Size	2"
Max. Flow Rate	760L/min
Working Pressure	25Bar/350PSI
Material	Aluminum
Used with meter	M-50



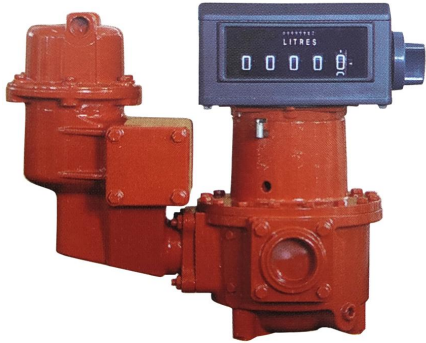
SV-50

SV-50/80 Stainless Steel Dual-flow Piston Solenoid Valve

Model	SV-50	SV-80
Size	DN50	DN80
Max. Flow Rate	380L/min	750L/min
Min. Flow Rate	50L/min	
Max. Pressure	10Bar	
Material	Stainless steel	
Voltage	AC 220V/50HZ	
Dimension	36*33*30cm	49*42*42cm
Net Weight	12kg	16kg
Gross Weight	13kg	23kg
Package	1pc/Carton	1pc/Wooden Case

FMC Series Rotary Vane Flow Meters

Application includes: blending, batching, dispensing, inventory control, and transferring of oils, solvents, chemicals, paints, fertilizer, etc



FMC-50

Meter with mechanical register, Air eliminator and strainer



FMC-100

Meter with mechanical register, air eliminator and filter



FMC-50-NX-1

Preset meter with mechanical preset register, printer, air eliminator and preset valve



- FMC series PD rotary vane meters are single case, angle-type, rotary vane, positive displacement meters.
- Superior accuracy and a wide range of products from gasoline to kerosene to fuel oils can be metered.
- Compact, versatile design can be readily fit into nearly all installations.
- Low pressure loss, a true gravity flow meter.
- Long service life, low friction ball bearings, fixed cam-type shaft construction give sustained accuracy and long time operation

2" air eliminator and strain



2" preset valve

Model	FMC-50	FMC-80	FMC-100
Size	50mm/2"	80mm/3"	100mm/4"
Flow Rate Range	38-380L/min	75-750L/min	150-1500L/min
Max Working Pressure	10Bar/150PSI		
Accuracy	±0.2%		
Repeatability	≤0.07%		
Dimension	59*34*57cm	70*40*58cm	83*46*65cm
Net Weight	42kg	56kg	80kg
Gross Weight	57kg	70kg	96kg
Package	1PC/Wooden Case		

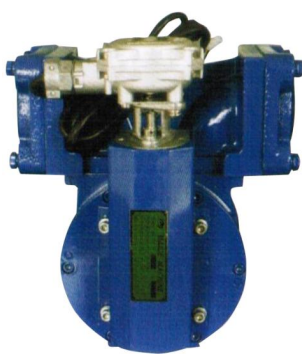
SM Series Rotary Vane Flow Meters

Application includes: Oil company, refineries, fuel depot, gas station and tank trucks, aircraft refueling boats, barges, oil transport companies



SM-80

Meter with mechanical register



SM-50

Meter with pulser



SM-50

Meter with mechanical register

Features:

- **Step-less adjusting mechanism allows a micro adjustment of the meter.**
- **Specially designed Manifold separates from measuring chamber for flexible installation.**
- **Low pressure loss**
- **Simple construction of rotor blades for easy and low maintenance cost.**
- **Wearing compensation to maintain a good accuracy after years use.**
- **Meter for viscous products up to 800 Cst.**

Materials:

Manifold: Aluminum

Covers: Steel

Rotor: Aluminium

Baldes: Carbon

Bearings: Stainless Steel

Seals/Gaskets: Viton, Buna 'N'

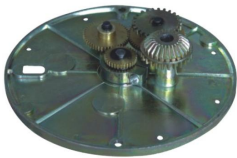
Technical Specification & Package Data

Model	SM-50	SM-80
Size	50mm/2"	80mm/3"
Volume Per Revolution	0.4L	2.27L
Flow Range	40-400L/min	133-1333L/min
Accuracy	±0.2%	
Repeatability	≤0.07%	
Max. Pressure	8Bar	
Temperature Range	-40℃ ~ +60℃	
Dimension	35*29*47cm	44*40*62cm
Net Weight	18.5kg	65kg
Gross Weight	19.5kg	75kg
Package	1PC/Carton	



JSQ-2 Mechanical register

- High visibility digital display for optimum readability in all ambient lighting.
- Latest technology, modern materials give maximum dependability at speeds to 250RPM of right wheel rod.
- Positive action knob reset.
- Built-in precision totalizer count up to 99,999,999 units, partial indicator 5 digit.
- Acetal resin components for smooth operation and extra long life.
- Fits most type of industrial flow meters.



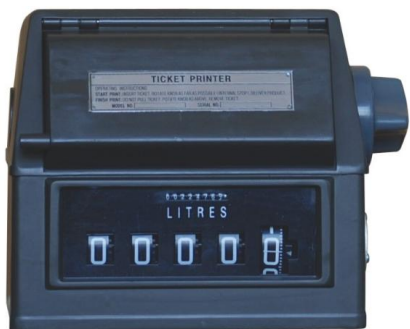
Gear Plate

The gear plate is installed in the base of the mechanical register to convert meter rotary shaft output to an unit of measurement, changing units of measurement, is simple since all conversions are made with easily accessible gears.

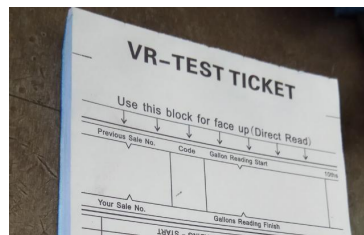


JSQ-3 Mechanical Preset register

Available for either single-stage or two-stage valve closure. Sets a predetermined volume and controls a mechanically linked valve.



JSQ-4 Mechanical register with ticket printer



Mechanical Register with Ticket Printer is idea mechanical printer for printing transaction record.

JSQ-2/E Electronic Register Systems adopts the modern high-performance ARM microprocessor with the function to high operation speed, low power consumption, stable performance. Intrinsically safe designed, it is more stable and reliable with the strong functions. JSQ-2/E Electronic Register Systems is the ideal substitute products for the traditional mechanical register with advantage of high-precision measurement, stable performance, Widely installed on all kind of flow meters, with the LCD display, easy & friendly operation, widely used in stock terminal, oil tank truck, service station, boatyard, etc.



JSQ-2/E

Power	AC220±20%, 50HZ±1HZ
Temperature	-20℃~+55℃
Humidity	≤95%
Partial indicator	6 digital
Totalizer	8 digital
Precision	±0.1%



LC Series Cast iron Oval Gear Meters

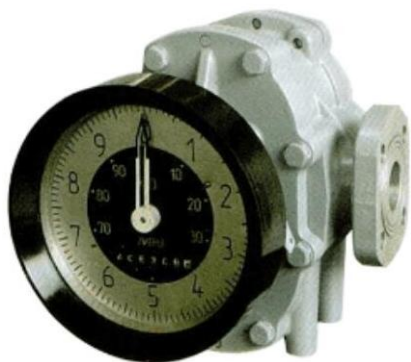
LC Series Cast Iron oval gear meter has the ability to handle a wide range of fluid viscosity with exceptional levels of repeatability and durability, applying in the petroleum, chemical, food industry, etc.



LC-40



LC-150



OGM-R-25/40 Oval Gear Meter

Accuracy（％）		±0.3			
（Mpa）		1.6(cast iron house)		4.0(cast steel house)	
Working Temp,（℃）		-30～+160			
Viscosity（mpa.s）		0.6～200			
Model	DN （mm）	Flow range（m3/h）			
		Petroleum products (mpa.s)			Chemical Liquids
		0.6～2	2～8	8～200	0.6～200
LC-10	10	0.15～0.4	0.08～0.4	0.04～0.4	0.1～0.4
LC-15	15	0.38～1.5	0.25～1.5	0.15～1.5	0.3～1.5
LC-20	20	0.75～3	0.4～3	0.3～3	0.6～3
LC-25	25	1.5～6	0.8～6	0.6～6	1.2～6
LC-40	40	3～15	2～15	1.5～12	2.4～12
LC-50	50	4.8～24	3.2～2.4	2.4～24	3.8～19
LC-80	80	12～60	8～60	6～60	10～50
LC-100	100	12～100	13～100	10～100	16～80
LC-150	150	30～150	20～150	15～150	30～150

Model	OGM-R-25	OGM-R-40
Size	25mm/1"	40mm/1.5"
Flow Range	20-120L/min	40-400L/min
Accuracy	±0.5%	
Repeatability	≤0.17%	
Max. Pressure	16Bar	6Bar
Package	2pcs/ctn	1pc/ctn
Net Weight	13.4kg	19.5kg
Gross Weight	14.4kg	20.5kg
Dimension	49.5*30*35cm	36*33*30cm